

**WIDE UNIVERSAL ARM BOARD**

**PRODUCT INFORMATION**

**PHILLIPS-SAFETY.COM**

**COPYRIGHT ©2025. ALL RIGHTS RESERVED**



**PHILLIPS SAFETY**  
PRODUCTS INC.

## PRODUCT INFORMATION

WIDE UNIVERSAL ARM BOARD | AB-11.5x31.5-WIDE



The Wide Universal Arm Board is designed to provide both patient comfort and clinician efficiency during procedures that require reliable arm positioning. Its expanded width accommodates both the patient's arm and essential procedural supplies, giving staff a stable, convenient workspace without the need for additional accessories.

Crafted from durable HDPE, this arm board is radiolucent and MR-safe, ensuring clear imaging compatibility across surgical, radiology, and interventional environments. Its tapered design allows the board to slide easily beneath the patient's shoulder, supporting smoother insertion and promoting effective venous distention—especially valuable during IV placement, injections, or contrast administration.

The smooth HDPE surface cleans easily, supporting strict hygiene and infection control protocols.

The Phillips Safety Wide Universal Arm Board is an excellent choice for facilities that need a versatile, easy-to-position support surface that improves workflow and enhances patient stability throughout a wide range of procedures.

## SPECIFICATION

---

**COLOR:** White

**MATERIAL:** HDPE

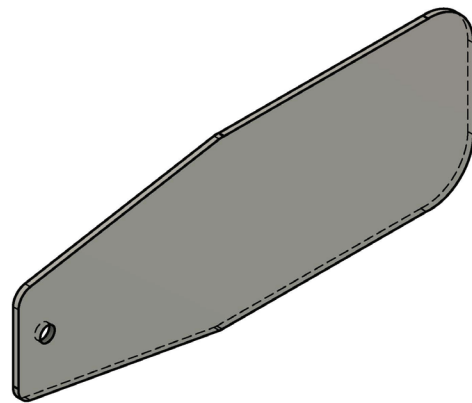
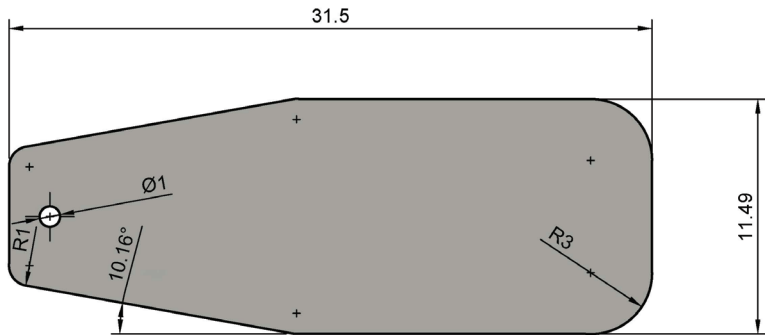
**SIZE:** 31.5" x 11.5" x 3/8"

**FEATURES:** Tapered design;

Radiolucent; MRI Safe.

**PRODUCT INFORMATION**  
 WIDE UNIVERSAL ARM BOARD | AB-11.5x31.5-WIDE

PRODUCT INFORMATION



PROJECT

A Wide Armboard HDPE 3/8


CREATED FOR: PHILLIPS-SAFETY


APPROVED:	SIZE	WEIGHT	DWG NO	REV
CHECKED:	A3		A Wide Armboard HDPE 3/8	
CREATED: Jerry Verden / etx3d.com	12/4/2025		SCALE 1:5	

# CONTACT

Should you need any further information,  
please do not hesitate to contact us.

123 Lincoln Blvd, Middlesex, NJ 08846, USA 

+1 866 575 1307 

service@phillips-safety.com 

www.phillips-safety.com 