

# LAMPWORKING TOOLS

## CATEGORY INFORMATION

PHILLIPS-SAFETY.COM

COPYRIGHT ©2025. ALL RIGHTS RESERVED



**PHILLIPS SAFETY**  
PRODUCTS INC.



Phillips Safety is the industry leader in occupational safety eyewear. In business for over 100 years, you are being served with the dedication and craftsmanship of a family owned company.

Phillips Safety has been producing occupational safety glasses since 1905 and continues to develop and produce the highest quality glasses and lenses today. A leading manufacturer of specialty safety eyewear in the United States, Phillips Safety adheres to strict ANSI Z87-2+ and EN 207 CE standard certifications, holding itself to a highest standard and prides itself on producing glasses with the finest quality materials available.

All safety glasses produced and sold by Phillips Safety meet strict industry standards for military, medical, research laboratories, and a variety of other industries.

With Phillips Safety's dedicated team, you can rest assured knowing that all your prescription safety needs are met.

## CATEGORY INFORMATION

### LAMPWORKING TOOLS

Lampworking demands tools that ensure both creativity and safety. Phillips Safety offers a wide range of lampworking tools designed to meet the needs of glassworkers, from beginners to professionals, ensuring optimal performance and protection.

Our collection includes tools for securely holding materials in place, handling hot glass with ease, shaping and adjusting glass forms, and making precise cuts for clean finishes. Whether you're working on delicate detailing or larger projects, we provide reliable solutions that support every stage of the process.

Among our most essential offerings are mashers, a staple for any hot glass worker. Our high-quality Parallel Masher exemplifies durability and precision, allowing you to flatten and shape glass with confidence. With interchangeable graphite heads—including flat round, square flat, lenticular, large radial, and small radial—you gain versatility for a wide range of glassworking techniques.





**CATEGORY INFORMATION**  
**LAMPWORKING TOOLS**




These interchangeable options ensure you always have the right tool for the job, while the durable construction keeps up with the demands of professional use.

All of our lampworking tools are crafted from heat-resistant, long-lasting materials, built to withstand the high temperatures of glasswork. They combine functionality and safety, so you can focus on your craft without worry.

In conclusion, Phillips Safety's lampworking tools, including our versatile masher collection, are indispensable for lampworking, flameworking, and glassblowing. Designed with precision and safety in mind, these tools provide the support you need for flawless results and a secure, productive workspace.

**CATEGORY INFORMATION**  
LAMPWORKING TOOLS



# **PHILLIPS SAFETY LAMPWORKING TOOLS**

**PRODUCT INFORMATION**  
BLUNT-END SERRATED STAINLESS STEEL TWEEZERS | GB-TZ02



Precision stainless steel tweezers with blunt, serrated tips for secure control on hot glass without cutting. These tweezers are available in 14cm (5.5"), 16cm (6.3"), 20cm (7.9"), and 25cm (9.8") total lengths. Ideal for shaping molten glass (fish fins, "candy wrapper" twists, flower petals/leaves, ruffles), pinching off bubbles, holding components for flame annealing and placing them into the annealer, and stripping the surface of large-diameter rods to expose a cleaner core for encasing.

**SPECIFICATION**

<b>BRAND:</b> Phillips Safety	<b>AVAILABLE LENGTHS:</b> 14cm (5.5"),
<b>PRODUCT TYPE:</b> Lampworking Tools	16cm (6.3"), 20cm (7.9"), and 25cm (9.8")
<b>MATERIAL:</b> Stainless steel	

**PRODUCT INFORMATION**  
GLASS BLOWING BBQ MASHERS | GB-BBQ



The Glass Blowing BBQ Mashers are versatile tools designed for shaping and manipulating hot glass. Ideal for achieving the desired form in your lampworking projects, these mashers are essential for any glassworker looking to create intricate designs.

**SPECIFICATION**

**BRAND:** Phillips Safety

**PRODUCT TYPE:** Lampworking Tools

## PRODUCT INFORMATION

GLASS BLOWING DIAMOND SHEARS | GB-DS



The Glass Blowing Diamond Shears are essential for cutting glass with precision. These shears are designed to provide clean cuts, making them a valuable addition to your lampworking toolkit.

## SPECIFICATION

**BRAND:** Phillips Safety

**PRODUCT TYPE:** Lampworking Tools



## PRODUCT INFORMATION

GLASS BLOWING HOT FINGERS | GB-HF



The Glass Blowing Hot Fingers are designed to help glassworkers safely handle hot materials. With a focus on comfort and control, these tools enable you to work with hot glass effectively.

## SPECIFICATION

**BRAND:** Phillips Safety

**PRODUCT TYPE:** Lampworking Tools

**PRODUCT INFORMATION**  
GLASS BLOWING NEEDLE JACKS | GB-NJ



The Glass Blowing Needle Jacks are designed for manipulating and shaping glass with precision. These tools are great for adding intricate details to your glass pieces, making them essential for any lampworking setup.

## **SPECIFICATION**

---

**BRAND:** Phillips Safety

**PRODUCT TYPE:** Lampworking Tools

**PRODUCT INFORMATION**  
GLASS BLOWING ROD HOLDERS | GB-RH



The Glass Blowing Rod Holders are essential tools for securely holding glass rods during the lampworking process. Their sturdy design allows for safe and easy manipulation of hot glass materials.

**SPECIFICATION**

**BRAND:** Phillips Safety

**PRODUCT TYPE:** Lampworking Tools

**PRODUCT INFORMATION**  
GLASS BLOWING ROD REST | GB-RR



The Glass Blowing Rod Rest is a practical tool designed to support glass rods while you work. This tool helps keep your workspace organized and allows for easier access to your materials.

## **SPECIFICATION**

---

**BRAND:** Phillips Safety

**PRODUCT TYPE:** Lampworking Tools

## PRODUCT INFORMATION

GLASS BLOWING STRAIGHT SHEARS | GB-SS



The Glass Blowing Straight Shears are designed for making clean cuts in glass. They are an essential tool for achieving straight edges and precise shapes in your lampworking projects.

## SPECIFICATION

**BRAND:** Phillips Safety

**PRODUCT TYPE:** Lampworking Tools

## PRODUCT INFORMATION

GLASS BLOWING TUNGSTEN BENT TWEEZERS | GB-TBT



The Glass Blowing Tungsten Bent Tweezers are specialized for handling hot glass with precision. Their bent design allows for better control and manipulation of glass pieces, making them valuable for intricate work.

## SPECIFICATION

**BRAND:** Phillips Safety

**PRODUCT TYPE:** Lampworking Tools



**PRODUCT INFORMATION**  
GLASS BLOWING TUNGSTEN BENT TWEEZERS | GB-TBT



The Glass Blowing Tungsten Bent Tweezers are specialized for handling hot glass with precision. Their bent design allows for better control and manipulation of glass pieces, making them valuable for intricate work.

**SPECIFICATION**

**BRAND:** Phillips Safety

**PRODUCT TYPE:** Lampworking Tools

**PRODUCT INFORMATION**  
HEMOSTAT LOOP FORCEPS | GB-HLF



Phillips Safety's 9-Inch Hemostat Forceps are crafted from durable stainless steel and feature serrated looped tips designed for a secure grip on hot, round, or irregularly shaped glass pieces. Measuring 9 inches in length, these forceps are ideal for safely retrieving preheated glass from an oven or picking up pieces that have dropped from a punty. The locking mechanism provides steady, controlled handling, making them an essential tool for lampworkers and hot glass artists needing reliability and precision in the studio.

## **SPECIFICATION**

---

**BRAND:** Phillips Safety

**PRODUCT TYPE:** Lampworking Tools

**MATERIAL:** Stainless steel

## PRODUCT INFORMATION

LAMPWORKING DIAMOND SHEARS | GB-LDS



The Lampworking Diamond Shears are vital for making accurate cuts in glass. Their design helps ensure that every cut is precise, which is crucial for detailed lampworking projects.

## SPECIFICATION

**BRAND:** Phillips Safety

**PRODUCT TYPE:** Lampworking Tools

**PRODUCT INFORMATION**  
MICRO MASHING TWEEZERS | GB-TZ01



Phillips Safety's Micro Mashing Tweezers are crafted from high-quality stainless steel for durability, corrosion resistance, and long-lasting performance. These long tweezers measure approximately 4¼" in total length and feature small, flat, thin mashing pads measuring just ¼" x ½", making them perfect for precision work in tight or detailed areas. Ideal for lampworking, flameworking, and other fine glasswork, they offer excellent control when manipulating soft glass or creating intricate designs. A reliable, essential tool for any serious glass artist.

## **SPECIFICATION**

---

**BRAND:** Phillips Safety

**PRODUCT TYPE:** Lampworking Tools

**MATERIAL:** Stainless steel

**PRODUCT INFORMATION**  
PARALLEL MASHER TWEEZERS, SMALL | GB-TZPM-S



Phillips Safety’s Parallel Masher Tweezers are a must-have tool for lampworking and hot glass applications. Made from durable stainless steel, these tweezers measure approximately 6 inches in total length and feature masher plates sized  $\frac{3}{8}$ " x  $\frac{3}{8}$ " at the tips. The parallel action ensures even pressure across the surface, making them ideal for precision shaping, flattening, and texturing hot glass. These tweezers are designed for comfort and control, perfect for consistent results in delicate and repetitive tasks.

**SPECIFICATION**

**BRAND:** Phillips Safety  
**PRODUCT TYPE:** Lampworking Tools  
**MATERIAL:** Stainless steel

## PRODUCT INFORMATION

PARALLEL MASHER TWEEZERS, LARGE | GB-TZPM-L



Phillips Safety's Large Parallel Masher Tweezers are designed for lampworking and hot glass work that requires broader, even pressure. Made from durable stainless steel, these tweezers are approximately 6 inches in total length and feature large masher plates measuring  $\frac{3}{4}$ " x  $\frac{3}{4}$ " at the tips. The parallel action delivers uniform compression, making them ideal for flattening, shaping, or adding texture to larger sections of hot glass. Built for reliability and control, these tweezers are essential for artists working on more substantial glass pieces.

## SPECIFICATION

**BRAND:** Phillips Safety

**PRODUCT TYPE:** Lampworking Tools

**MATERIAL:** Stainless steel



**CATEGORY INFORMATION**  
LAMPWORKING TOOLS



## **PHILLIPS SAFETY MASHERS**

**PRODUCT INFORMATION**  
**2" SQUARE FLAT HEAD PARALLEL MASHER**



The 2" Square Flat Head Parallel Masher is a replacement head designed specifically for the Parallel Masher. It is made of high-quality graphite, with an internal diameter measurement of 1.75" for the round head and a square head measurement of 2" x 2". Please note that the 2" Square Flat Head Parallel Masher is sold individually so that replacement of chipped or broken sides is easy and affordable. If you need one complete set, remember to get two heads.

**SPECIFICATION**

**SIZE:** 1.75" FOR ROUND HEAD, 2" X 2" FOR  
THE SQUARE HEAD.

**WEIGHT:** 16 oz

**Sold individually**

**MATERIAL:** Graphite

**COLOR:** Black

**FEATURES:** Affordable, high-quality

**PRODUCT INFORMATION**  
**LARGE RADIAL HEAD PARALLEL MASHER**



The Large Radial Head Parallel Masher is a replacement head designed specifically for the Parallel Masher. It is made of high-quality graphite and has an internal diameter measurement of 1.75", with a 3/4" wide head indent. Please note that the Large Radial Head Parallel Masher is sold individually so that replacement of chipped or broken sides is easy and affordable. If you need one complete set, remember to get two heads.

**SPECIFICATION**

**SIZE:** INTERNAL DIANEMTER OF 1.75" , WIDE

**HEAD INDENT** 3/4"

**WEIGHT:** 16 oz

**Sold individually**

**MATERIAL:** Graphite

**COLOR:** Black

**FEATURES:** Affordable, high-quality

**PRODUCT INFORMATION**  
LENTIL HEAD PARALLEL MASHER



The Lentil Head Parallel Masher is a replacement head designed specifically for the Parallel Masher. It is made of high-quality graphite and has an internal diameter measurement of 1.75". Please note that the Lentil Head Parallel Masher is sold individually so that replacement of chipped or broken sides is easy and affordable. If you need one complete set, remember to get two heads.

**SPECIFICATION**

**SIZE:** 1.75" Diameter

**WEIGHT:** 16 oz

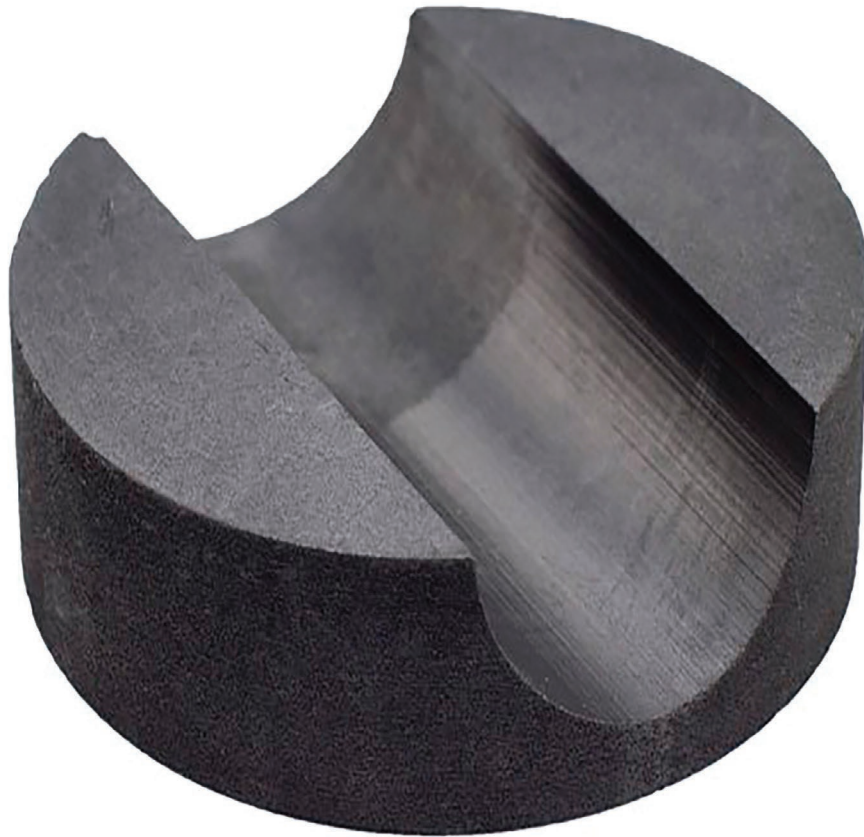
**Sold individually**

**MATERIAL:** Graphite

**COLOR:** Black

**FEATURES:** Affordable, high-quality

**PRODUCT INFORMATION**  
**SMALL RADIAL HEAD PARALLEL MASHER**



The Small Radial Head Parallel Masher is a replacement head designed specifically for the Parallel Masher. It is made of high-quality graphite and has an internal diameter measurement of 1.75", with a 5/8" wide head indent. Please note that the Small Radial Head Parallel Masher is sold individually so that replacement of chipped or broken sides is easy and affordable. If you need one complete set, remember to get two heads.

**SPECIFICATION**

**SIZE:** 1.75" DIAMETER, 5/8 WIDE HEAD INDENT

**WEIGHT:** 16 oz

**Sold individually**

**MATERIAL:** Graphite

**COLOR:** Black

**FEATURES:** Affordable, high-quality



## PRODUCT INFORMATION

### PARALLEL MASHER



The Parallel Masher is a versatile tool designed for flattening and shaping glass. Made of high-quality aluminum, this masher comes with a set of two graphite round flat heads measuring 1.75" in diameter. Other head shapes are also available separately, including a lentil head, a small radial head, a large radial head, and a 2" square flat head. For more information about different replacement heads, check out our Mashers collection.

#### SPECIFICATION

**SIZE:** 1.75" GRAPHITE ROUND FLAT HEADS

**USE:** FOR FLATTENING AND SHAPING GLASS

**MATERIAL:** GRAPHITE, ALUMINUM

Replacements are available and sold separately, including lentil head, small radial head, large radial head, and 2" square flat head.



**PRODUCT INFORMATION**  
**ROUND FLAT HEAD PARALLEL MASHER**



The Round Flat Head Parallel Masher is a replacement head designed specifically for the Parallel Masher. It is made of high-quality graphite and has an internal diameter measurement of 1.75". Please note that the Round Flat Head Parallel Masher is sold individually so that replacement of chipped or broken sides is easy and affordable. If you need one complete set, remember to get two heads.

**SPECIFICATION**

**SIZE:** INTERNAL DIANEMTER OF 1.75"

**WEIGHT:** 16 oz

Sold individually

**MATERIAL:** Graphite

**COLOR:** Black

**FEATURES:** Affordable, high-quality

# CONTACT

Should you need any further information,  
please do not hesitate to contact us.

123 Lincoln Blvd, Middlesex, NJ 08846, USA



+1 (866) 575 1307



service@phillips-safety.com



www.phillips-safety.com

