

LEAD SHEETS

CATEGORY INFORMATION

PHILLIPS-SAFETY.COM

COPYRIGHT ©2025. ALL RIGHTS RESERVED



PHILLIPS SAFETY
PRODUCTS INC.



Phillips Safety is the industry leader in occupational safety eyewear. In business for over 100 years, you are being served with the dedication and craftsmanship of a family owned company.

Phillips Safety has been producing occupational safety glasses since 1905 and continues to develop and produce the highest quality glasses and lenses today. A leading manufacturer of specialty safety eyewear in the United States, Phillips Safety adheres to strict ANSI Z87-2+ and EN 207 CE standard certifications, holding itself to a highest standard and prides itself on producing glasses with the finest quality materials available.

All safety glasses produced and sold by Phillips Safety meet strict industry standards for military, medical, research laboratories, and a variety of other industries.

With Phillips Safety's dedicated team, you can rest assured knowing that all your prescription safety needs are met.

CATEGORY INFORMATION

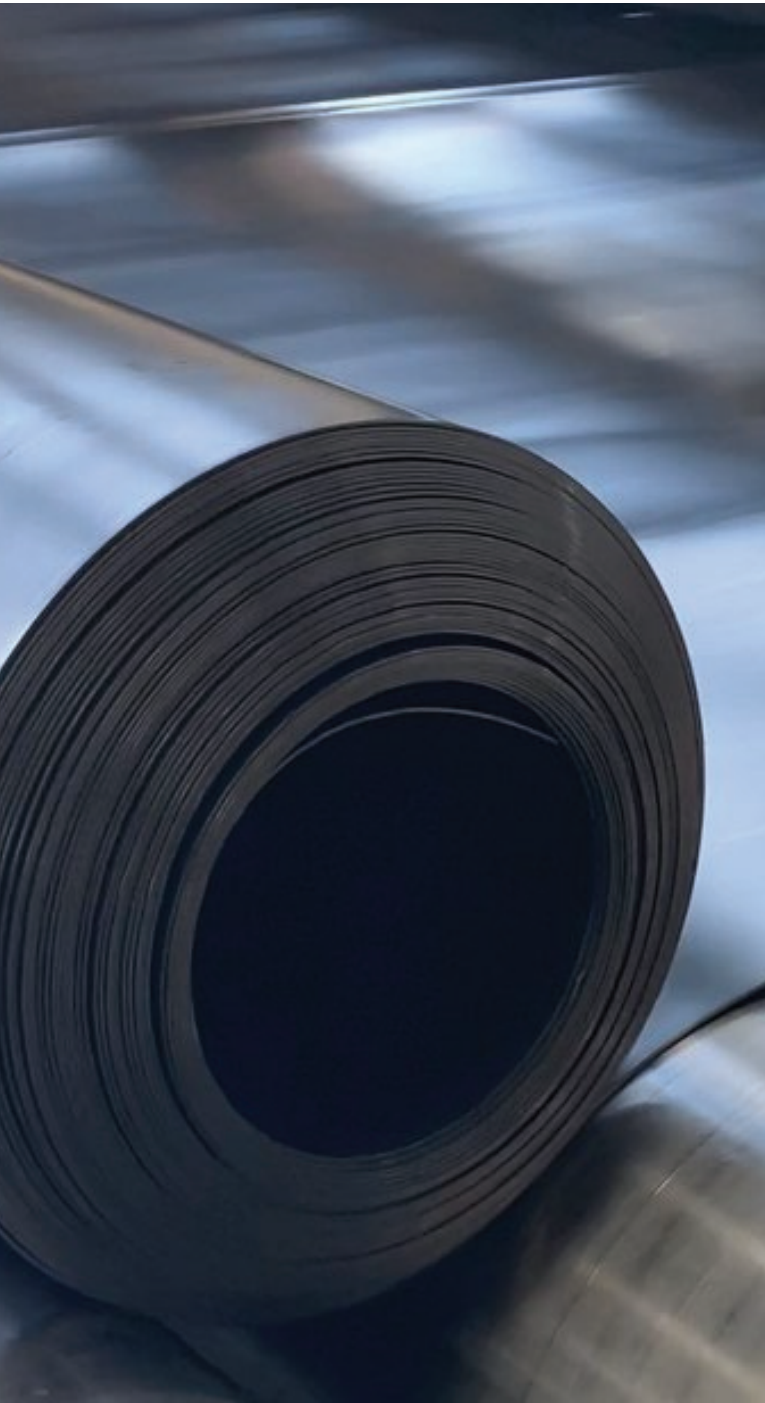
LEAD SHEETS

At Phillips Safety, we are proud to offer high-quality lead sheet to our customers. Lead sheet is an extremely multi-versatile and multi-purpose product that can be used to protect you and others in a wide variety of situations. Regardless of your purpose or need for lead sheeting, you have come to the right place, as we have a variety of sizes and thicknesses for you to choose from. Phillips Safety sells lead sheeting by the square foot, and one full roll equals approximately 48 inches by 96 inches. To request a quote for our lead sheeting, feel free to contact us. Rest assured that we do everything we can to provide our high-quality lead sheeting for the lowest possible prices. Ultimately, no order is too large or too small.

Plus, lead sheets are an useful option for building acoustic control systems, because they are an effective and efficient barrier when used alone or fastened to the wall. Thus, they improve noise reduction in environments like hospitals, apartment buildings, industrial plants, and office buildings.



CATEGORY INFORMATION
LEAD SHEETS



They can also be adhesively bonded to gypsum board or plywood, or be used to line tanks and containers to prevent corrosion. It covers uses such as crafting fishing weights, firearm ammunition, and other artistic creations. Other uses for lead sheeting include radiation shielding, packing and sealing material, gasketing, ballasts and corrosion resistance lining.

Don't hesitate to check out our collection of Lead Sheeting. We are confident that you will find the perfect solution for your needs, with the features and specifications that you want. If you need help or more information about our products, we are just one click away: talk to us through our chat, e-mail us at service@phillips-safety.com, or call us at 1-866-575-1307.

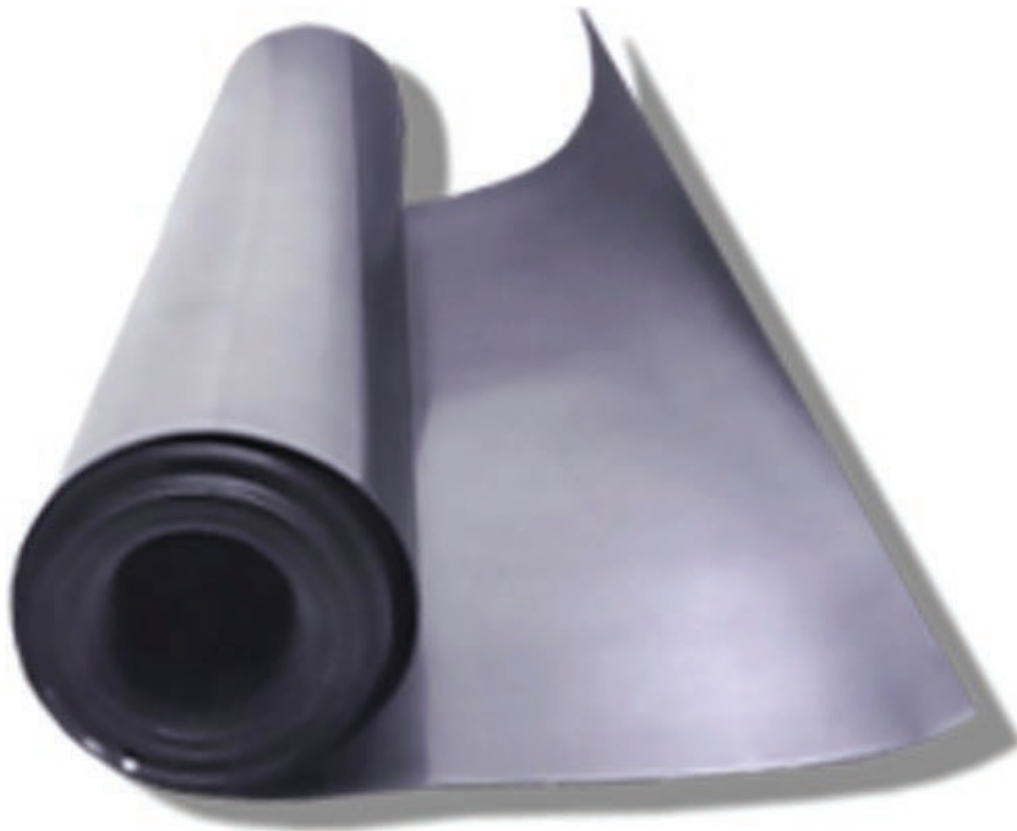
CATEGORY INFORMATION
LEAD SHEETS



PHILLIPS SAFETY
LEAD SHEETS

PRODUCT INFORMATION
LEAD SHEETING 1/8" THICKNESS

1/8" (0.133") Thickness



The Lead Sheeting 1/8" Thickness is a multi-purpose product that covers uses such as crafting fishing weights, fire arm ammunition, and other artistic creations. Other uses for lead sheeting include radiation shielding, packing and sealing material, gasketing, ballasts and corrosion resistance lining. Plus, lead sheets are an useful option for building acoustic control systems. That is because they are an effective and efficient barrier when used alone or fastened to the wall. They can also be adhesively bonded to gypsum board or plywood. Acoustical lead sheets have been developed to improve noise reduction in various environments. This includes hospitals, schools, office buildings, industrial plants, apartment buildings, and other multi-family buildings. In addition, the Lead Sheeting 1/8" Thickness can be used to line tanks and containers to prevent corrosion. Moreover, it is available in eight different size variations: 12" x 12", 12" x 24", 24" x 24", 24" x 36", 24" x 48", 36" x 48", 48" x 48", and 48" x 96".

SPECIFICATION

THICKNESS: 1/8"

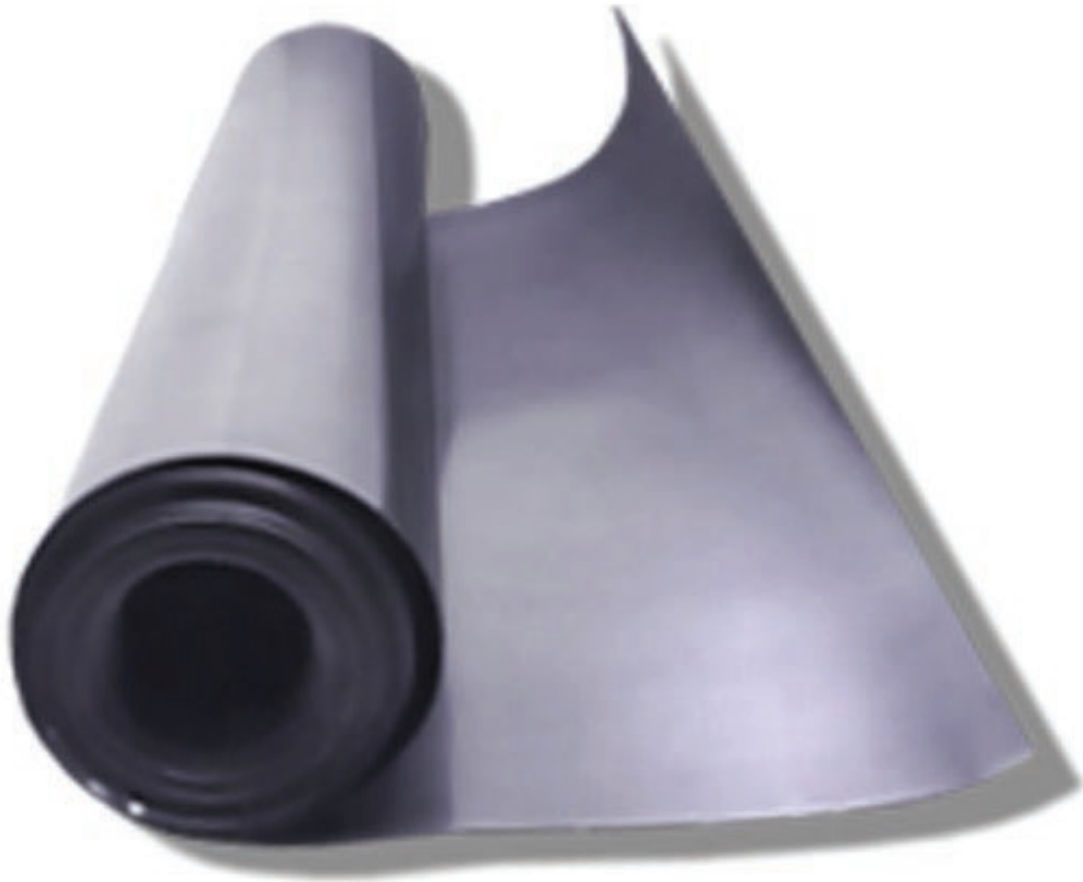
**SIZES: 12" x 12", 12" x 24", 24" x 24", 24" x 36",
24" x 48", 36" x 48", 48" x 48", and 48" x 96".**

MATERIAL: Lead

**USES: radiation shielding, sealing, corrosion resistance,
gasketing, noise reduction, fire arm ammunition, etc.**

PRODUCT INFORMATION
LEAD SHEETING 1/16" THICKNESS

1/16" (0.065") Thickness



The Lead Sheeting 1/16" Thickness is a multi-purpose product that covers uses such as crafting fishing weights, fire arm ammunition, and other artistic creations. Other uses for lead sheeting include radiation shielding, packing and sealing material, gasketing, ballasts and corrosion resistance lining. Plus, lead sheets are an useful option for building acoustic control systems. That is because they are an effective and efficient barrier when used alone or fastened to the wall. They can also be adhesively bonded to gypsum board or plywood. Acoustical lead sheets have been developed to improve noise reduction in various environments. This includes hospitals, schools, office buildings, industrial plants, apartment buildings, and other multi-family buildings. In addition, the Lead Sheeting 1/16" Thickness can be used to line tanks and containers to prevent corrosion. Moreover, it is available in eight different size variations: 12" x 12", 12" x 24", 24" x 24", 24" x 36", 24" x 48", 36" x 48", 48" x 48", and 48" x 96".

SPECIFICATION

THICKNESS: 1/16"

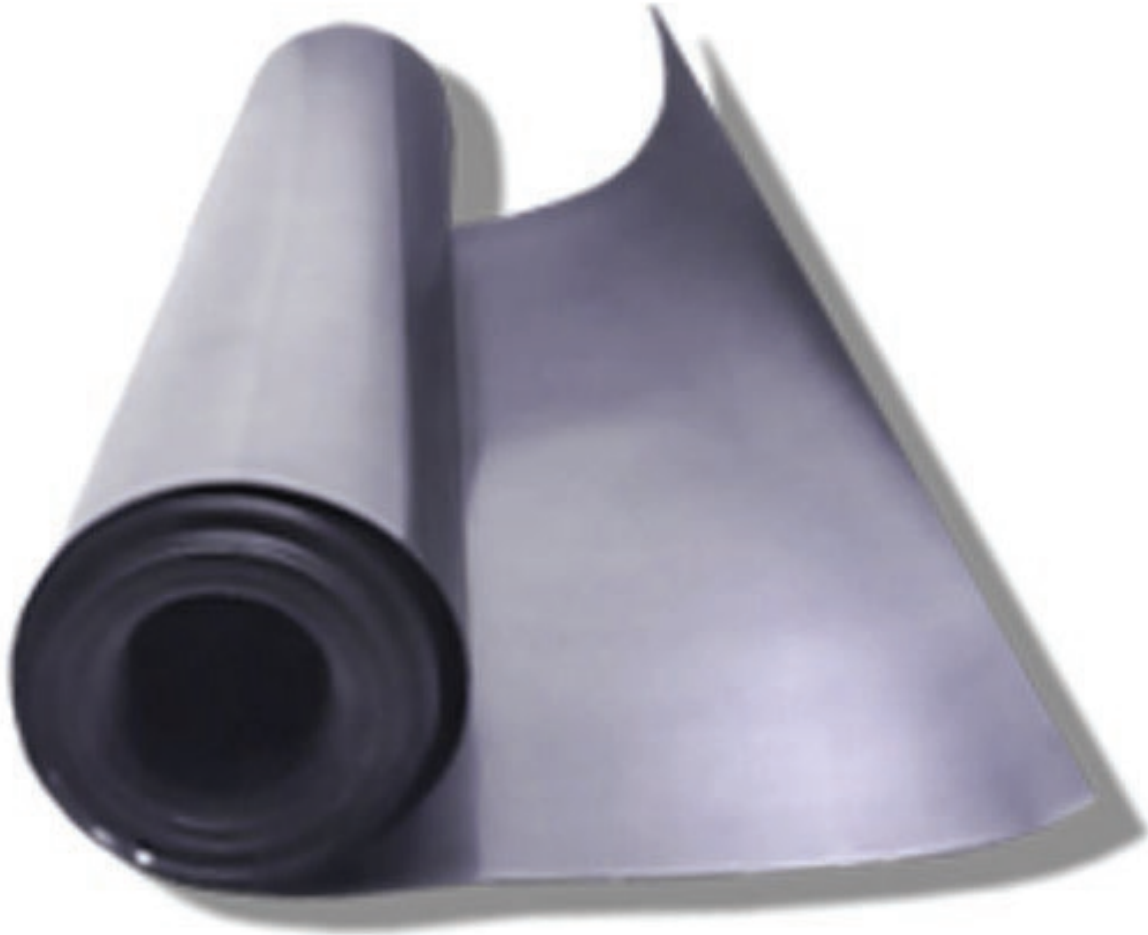
**SIZES: 12" x 12", 12" x 24", 24" x 24", 24" x 36",
24" x 48", 36" x 48", 48" x 48", and 48" x 96".**

MATERIAL: Lead

**USES: radiation shielding, sealing, corrosion resistance,
gasketing, noise reduction, fire arm ammunition, etc.**

PRODUCT INFORMATION
LEAD SHEETING 1/32" THICKNESS

1/32" (0.033") Thickness



The Lead Sheeting 1/32" Thickness is a multi-purpose product that covers uses such as crafting fishing weights, fire arm ammunition, and other artistic creations. Other uses for lead sheeting include radiation shielding, packing and sealing material, gasketing, ballasts and corrosion resistance lining. Plus, lead sheets are an useful option for building acoustic control systems. That is because they are an effective and efficient barrier when used alone or fastened to the wall. They can also be adhesively bonded to gypsum board or plywood. Acoustical lead sheets have been developed to improve noise reduction in various environments. This includes hospitals, schools, office buildings, industrial plants, apartment buildings, and other multi-family buildings. In addition, the Lead Sheeting 1/16" Thickness can be used to line tanks and containers to prevent corrosion. Moreover, it is available in eight different size variations: 12" x 12", 12" x 24", 24" x 24", 24" x 36", 24" x 48", 36" x 48", 48" x 48", and 48" x 96".

SPECIFICATION

THICKNESS: 1/32"

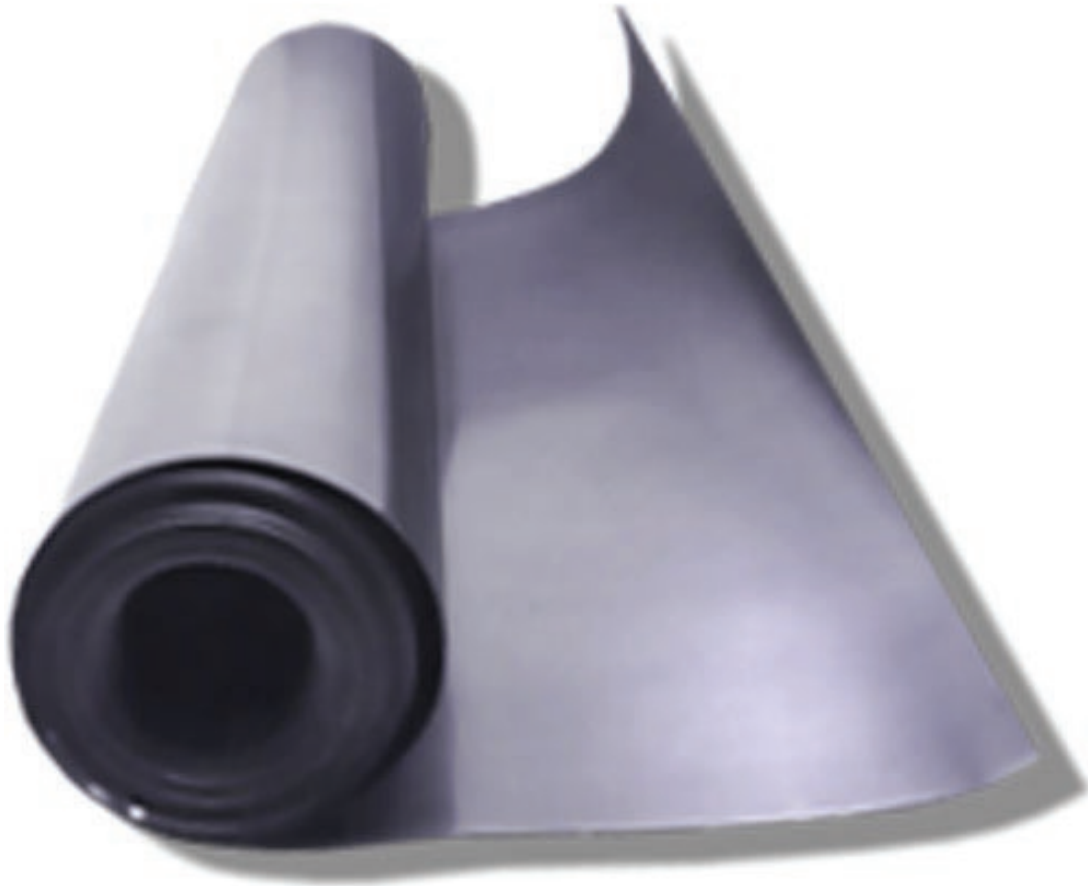
**SIZES: 12" x 12", 12" x 24", 24" x 24", 24" x 36",
24" x 48", 36" x 48", 48" x 48", and 48" x 96".**

MATERIAL: Lead

**USES: radiation shielding, sealing, corrosion resistance,
gasketing, noise reduction, fire arm ammunition, etc.**

PRODUCT INFORMATION
LEAD SHEETING 1/64" THICKNESS

1/64" (0.0165") Thickness



The Lead Sheeting 1/64" Thickness is a multi-purpose product that covers uses such as crafting fishing weights, fire arm ammunition, and other artistic creations. Other uses for lead sheeting include radiation shielding, packing and sealing material, gasketing, ballasts and corrosion resistance lining. Plus, lead sheets are an useful option for building acoustic control systems. That is because they are an effective and efficient barrier when used alone or fastened to the wall. They can also be adhesively bonded to gypsum board or plywood. Acoustical lead sheets have been developed to improve noise reduction in various environments. This includes hospitals, schools, office buildings, industrial plants, apartment buildings, and other multi-family buildings. In addition, the Lead Sheeting 1/16" Thickness can be used to line tanks and containers to prevent corrosion. Moreover, it is available in eight different size variations: 12" x 12", 12" x 24", 24" x 24", 24" x 36", 24" x 48", 36" x 48", 48" x 48", and 48" x 96".

SPECIFICATION

THICKNESS: 1/64"

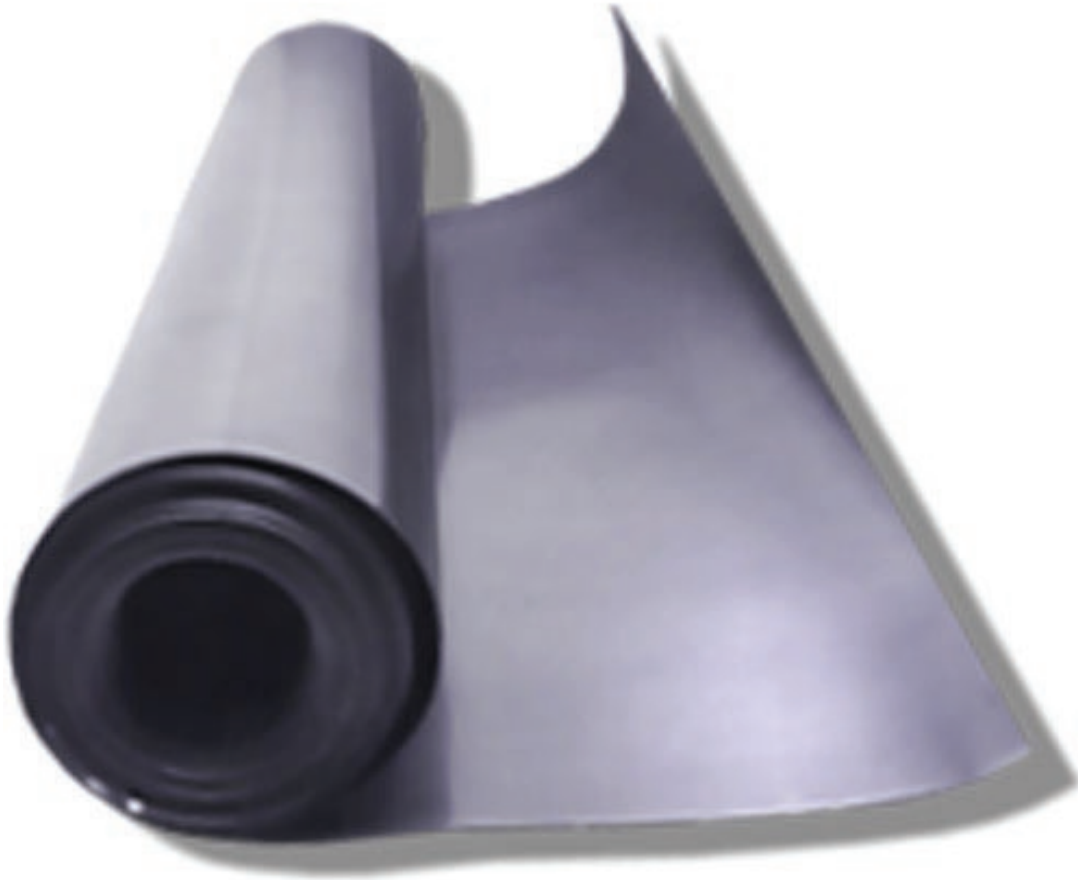
**SIZES: 12" x 12", 12" x 24", 24" x 24", 24" x 36",
24" x 48", 36" x 48", 48" x 48", and 48" x 96".**

MATERIAL: Lead

**USES: radiation shielding, sealing, corrosion resistance,
gasketing, noise reduction, fire arm ammunition, etc.**

PRODUCT INFORMATION
LEAD SHEETING 3/32" THICKNESS

3/32" (0.098") Thickness



The Lead Sheeting 3/32" Thickness is a multi-purpose product that covers uses such as crafting fishing weights, fire arm ammunition, and other artistic creations. Other uses for lead sheeting include radiation shielding, packing and sealing material, gasketing, ballasts and corrosion resistance lining. Plus, lead sheets are an useful option for building acoustic control systems. That is because they are an effective and efficient barrier when used alone or fastened to the wall. They can also be adhesively bonded to gypsum board or plywood. Acoustical lead sheets have been developed to improve noise reduction in various environments. This includes hospitals, schools, office buildings, industrial plants, apartment buildings, and other multi-family buildings. In addition, the Lead Sheeting 1/16" Thickness can be used to line tanks and containers to prevent corrosion. Moreover, it is available in eight different size variations: 12" x 12", 12" x 24", 24" x 24", 24" x 36", 24" x 48", 36" x 48", 48" x 48", and 48" x 96".

SPECIFICATION

THICKNESS: 3/32"

**SIZES: 12" x 12", 12" x 24", 24" x 24", 24" x 36",
24" x 48", 36" x 48", 48" x 48", and 48" x 96".**

MATERIAL: Lead


**USES: radiation shielding, sealing, corrosion resistance,
gasketing, noise reduction, fire arm ammunition, etc.**

CONTACT

Should you need any further information,
please do not hesitate to contact us.

123 Lincoln Blvd, Middlesex, NJ 08846, USA 

+1 (866) 575 1307 

service@phillips-safety.com 

www.phillips-safety.com 