

CUSTOM GLASS WELDING WINDOW, GREEN

PRODUCT INFORMATION

[PHILLIPS-SAFETY.COM](https://www.phillips-safety.com)

COPYRIGHT ©2025. ALL RIGHTS RESERVED



PHILLIPS SAFETY
PRODUCTS INC.

PRODUCT INFORMATION

CUSTOM GLASS WELDING WINDOW, GREEN

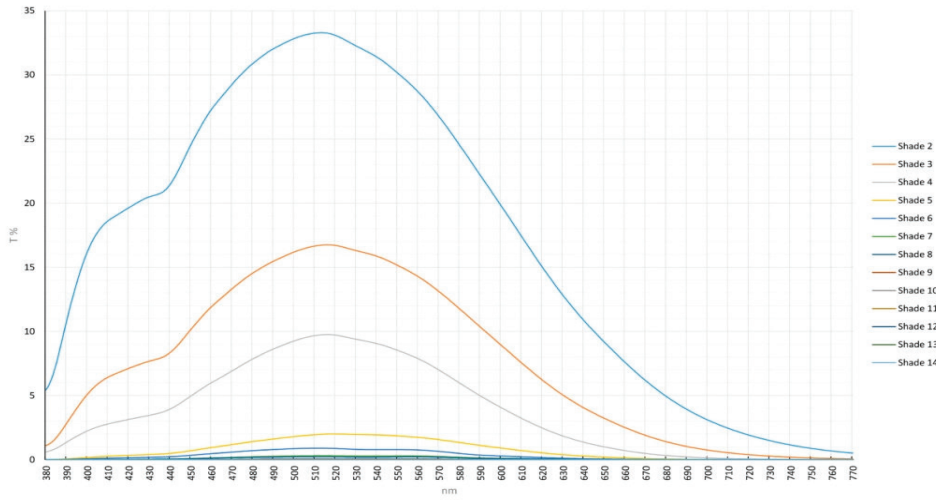


The Custom Glass Welding Window are custom glass sheets for use in welding windows or portholes for automated welding. They can be custom cut in any size sheet up to 36" x 42". These Phillips Safety glass sheets are available in shades 4, 5, 6, 8, 9, 10, 11, 12, and 14. The glass sheet thickness is 2.7mm with a tolerance of +/- 0.3mm.

The requested dimensions will be held to +1/16" tolerance. If you require a more precise tolerance, do not order on this site. Send your request to sales-team@phillips-safety.com for a quote.

WARNING: For glory hole observation, contact our sales-team (sales-team@phillips-safety.com) for guidance on use with these extreme temperatures. Misuse of the product at these extreme temperatures could lead to glass breakage.

PRODUCT INFORMATION
CUSTOM GLASS WELDING WINDOW, GREEN



- AVAILABLE SHADES**
- GREEN SHADE 4**
 - GREEN SHADE 5**
 - GREEN SHADE 6**
 - GREEN SHADE 8**
 - GREEN SHADE 9**
 - GREEN SHADE 10**
 - GREEN SHADE 11**
 - GREEN SHADE 12**
 - GREEN SHADE 14**


WELDING SHADE NUMBER	Visible Transmittance			UV Transmittance	IR Transmittance
	Maximum %	Nominal %	Minimum %	AVERAGE	AVERAGE
CLEAR	100	NA	85	NA	NA
1.7	55	50.1	43	0.1	20
2	43	37.3	29	0.1	15
3	18	13.9	8.5	0.07	9
4	8.5	5.18	3.16	0.04	5
5	3.16	1.93	1.18	0.02	2.5
6	1.18	0.72	0.44	0.01	1.5
8	0.164	0.1	0.061	0.004	1
9	0.061	0.037	0.023	0.002	0.8
10	0.023	0.0139	0.0085	0.001	0.6
11	0.0085	0.0052	0.0032	0.0007	0.5
12	0.0032	0.0019	0.0012	0.0004	0.5
14	0.00044	0.00027	0.00016	0.0001	0.3

PRODUCT INFORMATION
CUSTOM GLASS WELDING WINDOW, GREEN

CONTACT

Should you need any further information,
please do not hesitate to contact us.

123 Lincoln Blvd, Middlesex, NJ 08845, USA 

+1 (866) 757 1307 

service@phillips-safety.com 

www.phillips-safety.com 