

LEAD SHEETING 1/32" THICKNESS

PRODUCT INFORMATION

PHILLIPS-SAFETY.COM

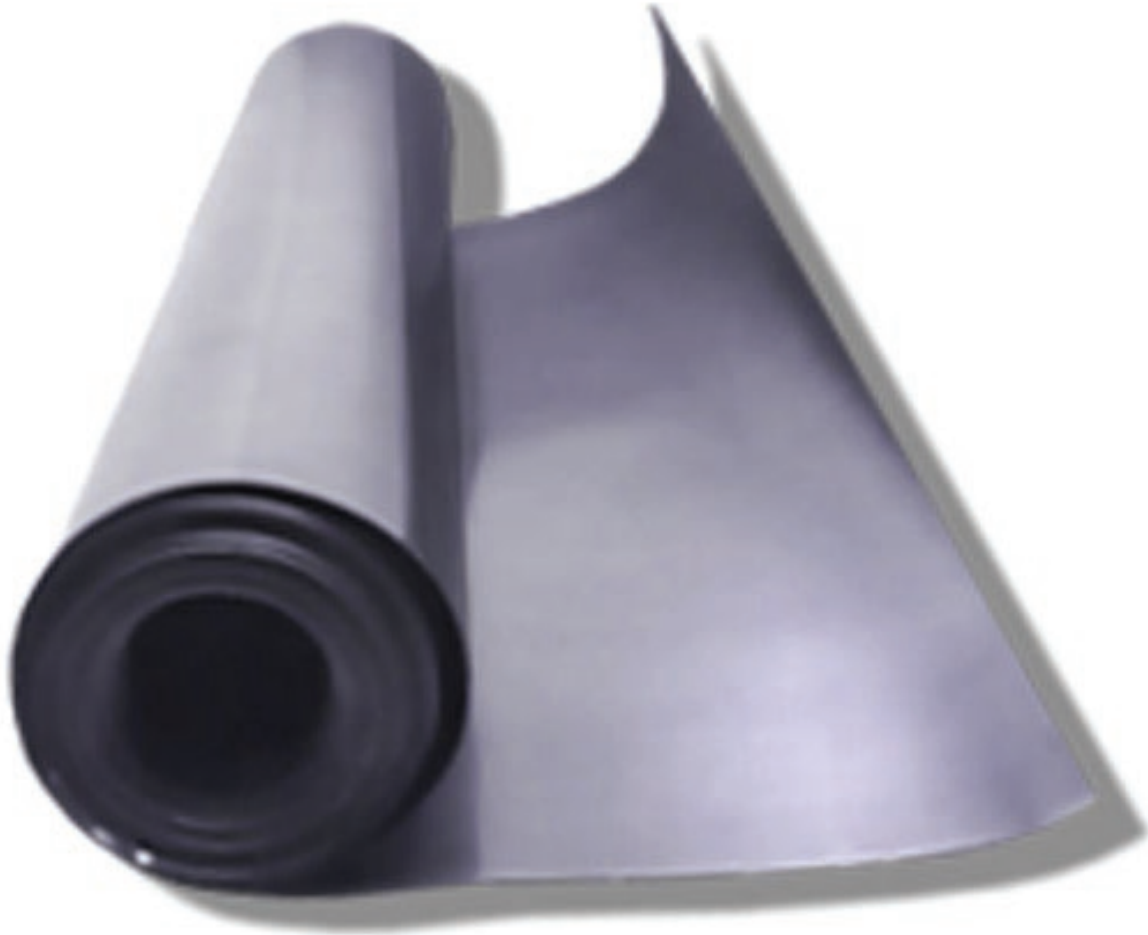
COPYRIGHT ©2025. ALL RIGHTS RESERVED



PHILLIPS SAFETY
PRODUCTS INC.

PRODUCT INFORMATION
LEAD SHEETING 1/32" THICKNESS

1/32" (0.033") Thickness



The Lead Sheeting 1/32" Thickness is a multi-purpose product that covers uses such as crafting fishing weights, fire arm ammunition, and other artistic creations. Other uses for lead sheeting include radiation shielding, packing and sealing material, gasketing, ballasts and corrosion resistance lining. Plus, lead sheets are an useful option for building acoustic control systems. That is because they are an effective and efficient barrier when used alone or fastened to the wall. They can also be adhesively bonded to gypsum board or plywood. Acoustical lead sheets have been developed to improve noise reduction in various environments. This includes hospitals, schools, office buildings, industrial plants, apartment buildings, and other multi-family buildings. In addition, the Lead Sheeting 1/16" Thickness can be used to line tanks and containers to prevent corrosion. Moreover, it is available in eight different size variations: 12" x 12", 12" x 24", 24" x 24", 24" x 36", 24" x 48", 36" x 48", 48" x 48", and 48" x 96".

SPECIFICATION

THICKNESS: 1/32"

**SIZES: 12" x 12", 12" x 24", 24" x 24", 24" x 36",
24" x 48", 36" x 48", 48" x 48", and 48" x 96".**

MATERIAL: Lead

**USES: radiation shielding, sealing, corrosion resistance,
gasketing, noise reduction, fire arm ammunition, etc.**


PRODUCT INFORMATION
LEAD SHEETING 1/32" THICKNESS

CONTACT

Should you need any further information,
please do not hesitate to contact us.

123 Lincoln Blvd, Middlesex, NJ 08845, USA 

+1 (866) 757 1307 

service@phillips-safety.com 

www.phillips-safety.com 