

MOBILE LEADED BARRIER WITH 48" X 30" WINDOW

PRODUCT INFORMATION

PHILLIPS-SAFETY.COM

COPYRIGHT ©2025. ALL RIGHTS RESERVED



PHILLIPS SAFETY
PRODUCTS INC.

PRODUCT INFORMATION

MOBILE LEADED BARRIER WITH 48" X 30" WINDOW



The Mobile Leaded Barrier with 48" x 30" Window is a portable, full-body radiation barrier designed to protect against secondary radiation. It features 2.0mm lead equivalent opaque panels of solid, leaded x-ray protection with contoured sides. Its large 48" x 30" window is a viewing panel which can be chosen in two different materials: a 2.0mm lead equivalent high-quality Schott leaded glass or a 0.5mm lead equivalent leaded acrylic. With an overall size of 75" x 52.5", this Phillips Safety leaded barrier travels easily on its four-caster locking base steel legs. Please note it is recommended that two people move the barrier together at all times.

SPECIFICATION

LEADED BARRIER SIZE: 75" x 52.5"

VIEWING PANEL SIZE: 48" x 30"

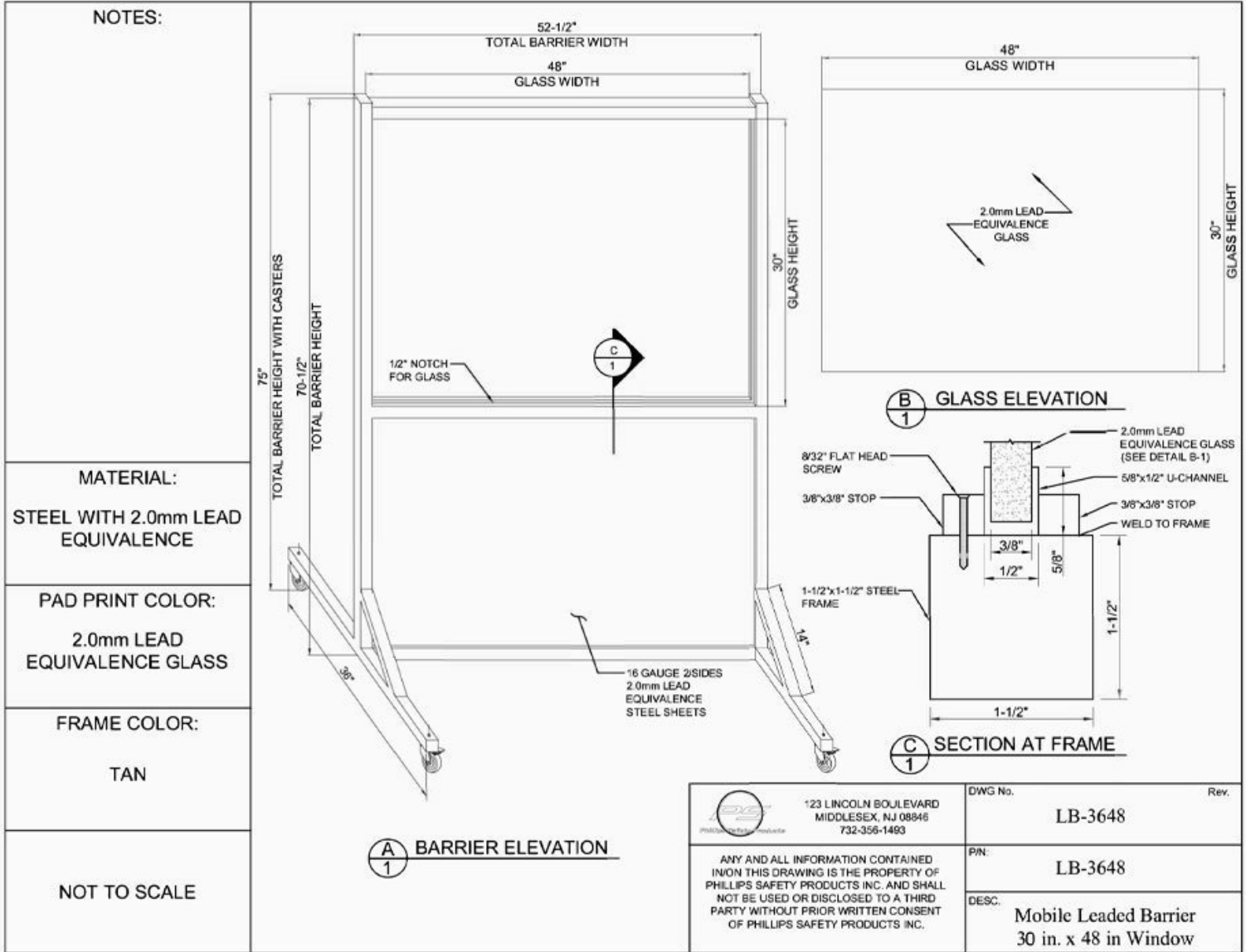
PROTECTION LEVEL : 2.00 mm Pb LE

MATERIAL: Metal

WINDOW MATERIAL: Schott glass or Acrylic

FEATURES: Viewing panel and four-caster locking base

PRODUCT INFORMATION
MOBILE LEADED BARRIER WITH 48" X 30" WINDOW



<p>123 LINCOLN BOULEVARD MIDDLESEX, NJ 08846 732-356-1493</p>	<p>DWG No. LB-3648</p>	<p>Rev.</p>
<p>ANY AND ALL INFORMATION CONTAINED IN/ON THIS DRAWING IS THE PROPERTY OF PHILLIPS SAFETY PRODUCTS INC. AND SHALL NOT BE USED OR DISCLOSED TO A THIRD PARTY WITHOUT PRIOR WRITTEN CONSENT OF PHILLIPS SAFETY PRODUCTS INC.</p>	<p>P/N: LB-3648</p>	<p>DESC: Mobile Leaded Barrier 30 in. x 48 in Window</p>


PRODUCT INFORMATION
MOBILE LEADED BARRIER WITH 48" X 30" WINDOW

CONTACT

Should you need any further information,
please do not hesitate to contact us.

123 Lincoln Blvd, Middlesex, NJ 08845, USA 

+1 (866) 757 1307 

service@phillips-safety.com 

www.phillips-safety.com 